

Perspective

Vol. 21 — No. 8

May 2012



Our May 2012 luncheon program will feature Renda Brumeloe in a Piano Consortium

By
Jack David Arnold, Ph.D.

About five years ago when I was President of the Academy of Senior Professionals (ASP) at Southern Nazarene University (SNU), Mrs. B. Kaye Stearman, my faithful friend and fellow classmate of the Class of 1946 at Bethany-Peniel College (now SNU), said to me after one luncheon meeting, “You ought to get Renda Brumeloe up there to play that piano!”

I replied, “Who is Brenda Brumeloe?” After that brief conversation with her, I made it a priority to get to know him. I have discovered over the past five years that he is an exemplary Christian gentleman, accomplished pianist, caring colleague, charismatic leader, published author, former minister of music, and United Air Lines Captain; and furthermore, he is “an Oklahoma treasure” who is now my Christian brother, wise confidant, and close friend.



Concerning his Piano Consortium, Brumeloe wrote to me on April 5, 2012, “It is not so much a concert as a fun look at piano literature and how we enjoy and process music in our lives. Composers and musicians are funny people by nature. Much of the literature is born in folk music and forms.”

He will narrate little-known facts and play examples of popular-and-familiar tunes. Brumeloe wishes to hereby publicly thank the Albert Evans Piano Company for supplying a grand piano for his Piano Consortium at the May 14 luncheon program. Brumeloe further wrote, “Our own ASP member and piano extraordinaire, Wally Brown, will play a piano prelude as we gather for the luncheon meeting.”

Renda Brumeloe, the fourth of seven children, was born in Alabama and reared in a Church of the Nazarene parsonage. He holds Bachelor of Arts and Master of Music degrees in piano performance from the University of Alabama; taught high school choral music in Alabama and Florida; served as adjudicator and clinician in district and state choral festivals; and was a minister of music in the Church of the Nazarene for twenty-two (22) years.

Along with his musical pursuits and accomplishments, Brumeloe dreamed of learning to fly as a youngster. Bringing his music-vocational career forward, he earned flight-instructor, flight-engineer, and multiple-commercial-pilot ratings. In 1987, he was hired by the United Airlines as a pilot and is now a retired Captain from the United Airlines.

His vocational book, *Life at 35,000 Feet*, was published in 2011. He has continued writing and has also written a Bible-study curriculum. He is preparing a second devotional book of vocational-and-life experiences. Readers are encouraged to visit his internet blog at rendabrumeloe.com.

Renda Brumeloe’s wife, Sharon, is a registered nurse and educator. They have two married daughters and four beautiful granddaughters who live in Oklahoma City and Olathe, Kansas.

All persons interested in attending the May 14 ASP luncheon meeting should make their reservation by Thursday, May 10. All ASP members will be contacted for their reservations by telephone or e-mail; guests may make their reservations by contacting Mrs. Linda Carley, Reservations Chairperson, at 405.728.0515 or doncarley@prodigy.net

**LUNCHEON SPONSOR
CONCORDIA LIFECARE
LISA VELLEKAMP**



Your President's Point of View May Flowers

by Emmalyn German

This time of year cannot seem to pass without hearing the saying: "April showers bring May flowers." For this month of May, and my last report to you as President of ASP, I would like to talk about flowers.

I remember when I was a young girl in India, my parents were visiting in the mountain resort town of Kodaikanal, South India, where I attended boarding school. We were staying in a small rented cottage away from the boarding home while my parents were on vacation for a couple of months to get away from the brutal heat of the plains, and to have some quality time with our family. I happened to be outside with my father the day that a flower salesman happened by with a large bouquet of wild orchids. My father asked me if I would like to have some flowers. I answered with an enthusiastic "yes!" But I was really surprised and my heart almost burst with joy when he bought the **WHOLE BUNCH** of orchids, and gave them all to me. It was such an extravagant gift..., and I felt incredulously amazed at the depth of his expression and my thrill at receiving such a gift. This photo only captures the view of the outside, but not the emotions I felt.



So, dear friends, I would like to express my DEEP appreciation to all those who have been on our administrative council this year. From the bottom of my heart I am sending each of you a mental bouquet of orchids for all you have done to make this year an exceptional one for the Academy.



The first bunch goes to Eunice Trent, our director, who was such a great support to me, and leader extraordinaire. Bunches and bunches of orchids go to the members of our Administrative Council members this year:

(Continued on page 6)



"Sharing a Continuous Flight"

The Academy Perspective

---Publication Board---

Chair & Production Editor Joan Dozier
Copy Editor Darlene Overholt

---Columnists---

President's Column Emmalyn German
Obituaries Madalyn Long
Feature Writers Eunice Trent, Paul Scheie, Pat Perry
Library News Arlita Harris

---Staff Reporters---

Photography Emmalyn and Dale German
Programs Jack David Arnold
Morning Seminar Paul Scheie

---Communications Policy---

We value messages from our readers.
By mail: **The Academy Perspective (TAP)**, Southern Nazarene University, 6729 N.W. 39th Expressway, Bethany, OK 73008
By fax: (405) 491-6381
By computer: www.snu.edu —Alumni & Friends—ASP

---Newsletter Subscription Information---

Annual subscription cost for **The Academy Perspective**:
Non-members—\$10.00 per year
Members—Included in membership

---Contributions---

To make tax deductible contributions to the Academy of Senior Professionals:

Mail to: Gary Lance, Treasurer
5904 N. College, Bethany, OK, 73008



LUNCHEON SPONSORS 2011—2012



October 10 – Charles and Billie Harrison
November 14—Legend at Council Road
December 12 – Southern Plaza
January 16 – Mercer Adams, Marla Cole
February 27 – Dale and Emmalyn German
March 12 – Spanish Cove Retirement Village
April 12 – Southern Nazarene University- PLN
May 14 – Concordia Life Care Community,
Lisa Vellekamp



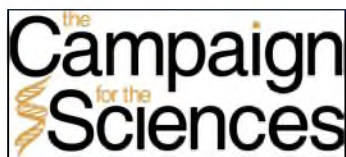
From The Director's Corner

by Eunice Trent, Director of ASP

Many of you may recall at one of our earlier ASP luncheons this year, that Todd Brant, Director of Planned Giving at Southern Nazarene University, provided a nice presentation about the *Campaign for the Sciences* at Southern Nazarene University.

Our SNU web site also provides excellent information about the Campaign, including a Virtual Tour and ways that we can invest in the future of Science education at SNU. Please visit the following link for additional information:

<http://snu.edu/campaign-for-the-sciences>.



**SECURING THE SNU
SCIENCE LEGACY
FOR FUTURE
GENERATIONS**

Excellence in Science is a hallmark of Southern Nazarene University. Across the years over 3,000 teachers, medical doctors, dentists, researchers, nurses and professors have graduated from SNU's Science programs. The quality of our graduates is evidenced by the over 90% successful admittance rate into medical schools by graduates of the pre-medical program. The School of Nursing has a 93% pass rate on the National Council Licensure Examination (NCLEX). To sustain these high acceptance rates into professional and allied health programs, equipment and teaching resources must keep pace with the technology available.

While the faculty of the Division of Science and Mathematics at SNU excel in teaching and are exceptionally qualified in their respective disciplines with 91% having earned the terminal degree in their field. The W. Don Beaver Science Building has served the purposes of Science education for forty years and is no longer adequate. As stated in the University's self-study prior to the 2010 accreditation renewal by the North Central Higher Learning Commission, the facility receives intensive use from hundreds of students each academic year and "is in serious need of major renovation and expansion."

Thus, a strategic plan to construct a new 25,891 square feet laboratory that will house teaching labs, faculty and teaching research labs, classroom and support space, is being advanced.

Anchored by a lead gift of \$1.5 million from Mr. J. D. and the late Mary West of Rogers, Arkansas, and a Challenge Grant in the amount of \$800,000 from the J.E. and L.E. Mabee Foundation, Inc., the Campaign for the Sciences holds the potential to transform the academic landscape of the University for students and faculty now and in the future.

The J.D. and Mary West Science Laboratory, Phase I of the multi-phase Campaign for the Sciences, is estimated to cost \$5,500,000. This cost estimate was derived from studying the needs of the various degree programs in order to provide standardized classroom technology, as well as specialized lab technology to support persistent and emerging trends in science education. The proposed design incorporates new technologies in instruction and research and allows for new teaching pedagogies that provide seamless integration between the classroom and laboratory learning. Major elements of the total expenditure are estimated as:

- Architectural and Surveys - \$593,595
- Lab Equipment and Furnishings - \$775,000
- Construction - \$4,131,405

In future phases of the Campaign, the University will continue to seek support to complete the plan, and to connect and renew the existing W. Don Beaver Science Building.

Your support for this Campaign will ensure that SNU graduates are equipped to provide medical care to the underserved and to conduct significant scientific research. Alumni will preserve our natural resources, provide quality science education in our public schools, and positively impact the quality of life for untold persons near and far for generations to come.



Memorial Day is officially celebrated on the last Monday during the month of May. Memorial Day is dedicated to service men and women who gave their lives for freedom and country. It is also a time to remember loved ones who have passed away. The roots of Memorial Day go back to 1865 and the end of the Civil War. In 1971, Congress changed it to the last Monday in order to afford a three day holiday weekend. Memorial Day was first called Decoration Day. It was changed to Memorial Day in 1882.

(Continued from page 2)

Renda Brumbeloe, president-elect; Miltonette Brasher, VP and member secretary; Gary Lance, treasurer; Joan Dozier, secretary and TAP editor; Jack David Arnold, program chairman; Bobbie Loper, membership chairman, Harold Dozier, bylaws and organization; to Darlene Overholt and Syble George, member representatives. Beautiful bouquets also go to others who have served with our council: Linda Carley, calling chairperson; Pat Perry, Travel Club coordinator; Paul Scheie, Morning Seminar coordinator; Arlita Harris, library resources; and Madalyn Long, historian. A special bouquet goes also to Irwin Harris, past president, who has kept us abreast of happenings in our community. Special flowers and appreciation go to our new member, Ginger Miller, who has added great beauty to our meetings with her lovely table decorations this year, and to Cheri Pack and Anita Hill who help us coordinate all the special needs we have in the Heritage room.

We have a lot of great things to look forward to in the coming year as our new President, Renda Brumbeloe assumes his office in October.

We will have a short business meeting at our May luncheon, with elections for the coming year. Please plan to complete an important questionnaire so we will know how to serve you best in the future.



Thank you for allowing me to serve you as President this year. It has truly been a wonderful experience for me!



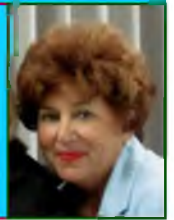
ASP Calendar

Monday May 14, 2012

9:00-11:00 a.m. Shuttle Service from the Sawyer Center lot (41st and Donald) to the Webster Commons
9:30-10:30 a.m. Morning Seminar in the President's Dining Room. (Webster Commons 3rd Floor)
11:00-a.m. to 1:00 p.m. Luncheon Meeting in the Heritage Room
1:00—1:30 p.m. Shuttle Service to the Sawyer Center parking lot
1:15-2:15 p.m. Administrative Council Meeting

ASP "Trek" Time

By Pat Perry



Dear ASP Members,



May each of you have a great summer and I will see you in the fall. If you have any ideas for trips next year, feel free to give me a call or contact me for more information. Keep in mind some larger trips that will be coming up.

- * October, 2012 -NYC for a Fall Foliage
- * Spring of 2013 cruise trip thru the Panama Canal.
- * Also in 2013 trip to Ireland/Scotland .

Pat Perry
373-4157



**ANNUAL MEETING
ADMINISTRATIVE
COUNCIL ELECTIONS
MAY 14, 2012**





LIBRARY NEWS

SNU RESOURCES

By Arlita Harris

This will be my final library article for the Perspective. I have resigned as SNU Library Director and will be retiring from all paying jobs effective July 13. I'm looking forward to doing all of the things that work has kept me from doing; you who are retired know that feeling.

One of the recent library projects that has really excited me is the digital publication of the BPC/BNC/SNU yearbooks. At this writing, you can search all of the yearbooks from the 1920 Bethanian through the 1937 Arrow by name or building.

Go to <http://snu.edu/snu-yearbooks>, click on the yearbook you want to search. It will open in the free ISSUU website (yes, there are ads that pay for it), and you can click on the yearbook cover to peruse it online. The arrows turn the pages, the small squares make the pages larger. If you want to search for a person's name, type it in the "search Issuu" box to go to the page where the person's name is found. If the search box is not visible on the page you are viewing, click on the small magnifying glass to bring up the search box. There is also a box that can be checked to search all publications from snuarchives.



The Fred Floyd Archives has some other interesting electronic archives, including the stories and photos of the parent institutions, including Arkansas Holiness College, Bresee College, Central Nazarene University, Oklahoma Holiness College and Texas Holiness University. A timeline on

the navigation bar shows when each of the parent institutions was founded and the names of their presidents as well as when they joined SNU.

Biographies of significant people in the history of SNU are linked to the archives webpage. You can read about A.K.Bracken, Bud Robinson, Charlie McConnell, C.B. Jernigan, E.C.DeJernett, H.F. Schmelzenbach, Phineas Bresee, and R.T. Williams in these online articles with photos.

I love reading the story of the 1951 Revival with Russell V. DeLong. The two-week revival began on April 1, 1951 with 125-150 at the altar each evening. All of the prayer requests were answered, as symbolized with the burning of the prayer request chest on the last night,

You can read current and back issues of Southern Light and The Echo on the Electronic Resources page and visit the Paul Gray Reading Room electronically by linking to that page on the navigation bar.

Archives research requests can also be made online by using the research request form on the navigation bar.

So - go to www.snu.edu/archives and enjoy visiting the Fred Floyd Archives virtually - or visit the archives personally on the north end of the first floor of the SNU Library. Also take the opportunity to thank Marion Snowbarger, who has been director of the Fred Floyd Archives for the past eleven years.

Marion has carried on the work of Dr. Fred Floyd and Dr. C. Paul Gray as Director of Archives. Marion is a member of ASP and will continue volunteering in the archives in his retirement.

Another SNU Library retiree to be congratulated is Joy Pauley, who is hanging up her cataloging tools after 32 years at SNU. An exciting library future is ahead with young and talented and well-trained library professionals at the helm. We congratulate them as well. At this writing, Wen Zhao, an SNU graduate with a double-Master's in Strategic Management and Library Science has been hired as the Director of Technical Services (Joy's position) and will begin work on June 1. He worked in the SNU Library as a student and has been well-trained by Joy during his internship here. Watch as other announcements are made in the Echo.



Thank you for the opportunity to share my thoughts and library stories with you during the last four years.

Blessings, Arlita Harris





Concerning Islam *By Paul Scheie*

Do you have a stereotypical mental picture of a Muslim? Do you believe it is an accurate portrayal of an average Muslim? Or, is it heavily influenced by what are described as being radical Muslims, or even terrorists?



We are told that, World wide, Christianity has more members than any other religion. Islam comes in second. Both groups claim their numbers are increasing. As a result we can expect more and more interactions between the two groups, and we already have learned that such interactions can be violent. Will this violence wax or wane? Nuclear weaponry has been achieved in countries with majorities in both religious groups; hence, the stakes may become quite high.

If we are to follow the God of the Old Testament we might suggest to “fight-em.” But, if we are to follow the God of the New Testament certainly we would seek peace. And so, it seems quite evident



that learning how to live next to each other in peace will require cool, thoughtful moderates from both sides. This, in turn, will require both populations learning more about each other. Are we up to it?

The Morning Seminar on May 14 will be conducted by an esteemed repeat performer at our Morning Seminar programs, Dr. Jack David Arnold. Dr. Arnold has taught college courses on a variety of religions, including Islam, and last summer he presented a seminar on Islam at Spanish Cove. Come and join us as he presents “Islam: Submission to Allah” at 9:30 a.m. in the President’s Dining Room on the third floor of Webster Commons.

PLN Presents

Brian Davis,
The TV Play-by-Play Announcer - Oklahoma City Thunder

Toby Rowland,
“The voice of the Sooners” The University of Oklahoma

April 12, 2012

11:30 a.m. – 1:00 p.m.
The Petroleum Club - Downtown



Clockwise
Dr Loren Gresham
Toby Rowland
Brian Davis

ASP Members
enjoying lunch at
the
Petroleum Club



Oklahoma City Skyline