



CRUSADER

JAN. 12, 1973 NAMPA ID.

Inflation forces Saga cutback

by Rod Leupp

The pinch of inflation is felt at every level of American society, and this is no less true for Saga Food Service. In a recent interview Mr. Dick White, Saga manager, stressed that inflationary food prices, coupled with sharp decrease in the number of boarding students, have caused Saga to take a hard look at how the operation's efficiency can be improved.

In recent weeks the Los Angeles firm of Richie and Associates has been on campus conducting a labor study to see how manpower may be better utilized. Several recommendations, including using one serving line at all meals, were tried on a tentative basis. The idea of one serving line was partially abandoned. There will be two lines for every evening meal, Saturday and Sunday lunch, and breakfast on Monday, Wednesday, and Friday. One serving line will be operating at the remaining meals.

Saga Food Service is a private corporation with public stock, and as such it receives no governmental subsidies.

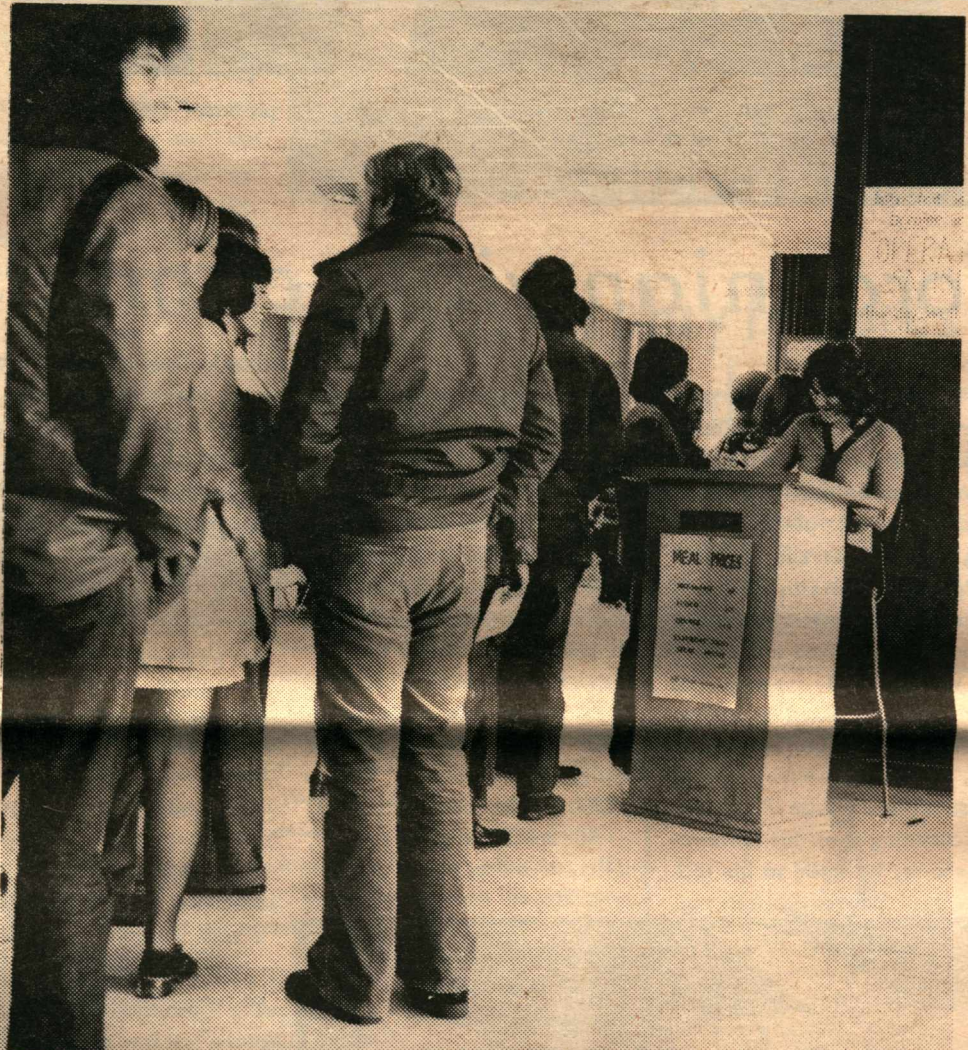
Like any business, Saga is

concerned with getting a fair return on its investment. In the words of Mr. White, "We don't make a profit, we earn it." But Saga must contend with skyrocketing food prices which have seen the cost of a dozen eggs go up seventy percent, from thirty-five to sixty cents, in the past few months.

Another of Saga's adversaries is the drop in the number of boarding students. The start of this school year saw about one hundred fewer paying customers than last year, and another drop of fifty is anticipated for this term.

Some student workers have been laid off in an effort to cut labor costs. Adjustments have been made resulting in the re-hiring of some students. The biggest cost savings has been the use of cooks, rather than students, to serve the weekday lunches.

Saga's difficulties could be eased considerably by cutting down on the menu offered. Many schools, outraged by the huge hike in beef prices, serve steak but once a month. But Mr. White is concerned that the food and selection be first rate, so the menu will remain as it is.



Students patiently wait to be served through one lunch line due to the cutback in Saga food services.



President's trip
questioned
page 5

Discouraging season
for Crusaders
pages 6-7





Jowdat "Joe" Alami (left) and brother Abe make way for NNC professor Helen Wilson. Joe recently enrolled at NNC as a freshman.

brother enrolls

Jordanian visits campus

by Bonnie Woodbeck

"He was the biggest man I'd ever seen." NNC professor Helen Wilson, on her way to Japan for a study tour, was transferring to another plane in Amman, Jordan when she first saw this 'giant' of a man in the airport terminal. After watching him for a few amazed moments, Miss Wilson finally overcame her timidity and walked to where Ibrahim "Abe" Alami was sitting, greeting him with, "Could you stand up, please?" Quickly recovering from his momentary shock, he stood to his full seven feet, (now seven feet and

one inch).

Thus began a rather unlikely friendship. After talking for some time, Miss Wilson inquired as to whether Abe would care to attend school in the United States. He readily consented.

Following two years of correspondence, Abe found himself transported across the Atlantic to a potatoe-sized college (NNC) in the state of Idaho in 1968. This was made possible through the Helen G. Wilson Scholarship for foreign students.

Abe spent two years at NNC, then travelled to Portland, Oregon to attend a special reading

school. During this time he began to lose his eyesight. A brain tumor was blamed for Abe's physical problems.

Since that time Abe has had two operations. It is hoped these operations will allow Abe to return to Jordan to enter into business with his father, a merchant.

While here at NNC with his mother, brother, and sister this past weekend, Abe told Coach Hills he has another brother, Mokram, who promises to be as tall as Abe. At present, Mokram is playing basketball at a British-American school in Syria, but is interested in coming to NNC.

Abe's other brother, Jowdat, ("Joe"), enrolled last weekend as a freshman. After studying for the last few years in Europe, Joe plans to earn a business degree at NNC.

Speaker notes needs of Christian education

Declaring that everyone is involved in Christian education regardless of his titled "position," Ms. Bobbie Donald charged the Issues and Answers Convocation audience Monday that this education must be changed realistically if it is to meet the needs of the modern mind.

Jesus was a teacher; he encouraged people to think about their relationship to God and to one another, and he has sent us into the world as teachers, Ms. Donald said.

If one is to teach God to the modern mind, he must do more than repeat phrases such as "God is our heavenly Father," for in that phrase alone the words 'God,' 'Heavenly,' and 'Father,' are for many people today, meaningless or tinged with connotations which obstruct the Christian message.

Thus, to be relevant in caring for others, the educator stated, "I must be able to understand what happens in the mind of almost any person of any age in any situation. Impos-

Because there is within a person "no distinction between thinking and acting," the church must not divorce its teachings from the lives of those it educates. This education must be the "deliberate and sustained effort in the community of faith which allows the persons involved to develop life styles" in a rapidly changing world.

Ms. Donald, who is a Christian educator at Boise's First United Methodist Church, stated that adherence to her message often means difficult decisions in everyday life and demands a close dependence upon Jesus.

Crusader staff changes made

Four new employees have begun work on the Crusader this term. Linda Blankenship, Linda Gould, and Mary Jo Wilcox are doing the typing.

Burke Jones has taken over as advertising manager.

THE CRUSADER

Published by the Associated Students of Northwest Nazarene College, 4001 Avenue and Juniper Street, P.O. Box C, Nampa, ID 83651. Second class postage paid at Nampa. Subscription rates: \$1.25 per term or \$3.75 per year. Published weekly except holiday and examination weeks during the academic year.

The Crusader serves as the tool of no faction of the college community—students, faculty, administration, alumni, constituency, or the college itself. Views expressed are those of the author and not necessarily those of the college or the Crusader.

Helen G. Wilson, advisor, without the responsibility of prior censorship.

Page 2

January 12, 1973



A series of outstanding diamond creations by California's most talented Goldsmiths and Artisans.

Golden Creations from the GOLDEN GATE

All designed to open the Golden Gates of Romance.

Pictured here — "A WEDDING THREESOME IN SCULPTURED GOLD" — A wedding set with matching groom's ring in hand finished deeply rich sculptured gold. Four smaller diamonds augment the beautiful center gem.

Please drop in for a leisurely inspection of this distinguished series. KARCHER MALL 466-6341

Diamonds and Fine Jewelry

THIS TERM MEANS EXCITING SESSIONS EACH SUNDAY

AT 9:45 A.M.

- JAN. 14 MISS HELEN WILSON DENOUNCES THE "JANUARY BLAHS."
- JAN. 21 CHUCK WILKES RETURNS TO NAMPA FROM THE MARANTHA JESUS PEOPLE CHURCH IN NEW MILFORD, NEW JERSEY AND REPORTS ON HIS EXPERIENCES THERE.
- JAN. 28 MISS HELEN WILSON.

FOUR GREAT MOVIES

- FEB. 4 "THROUGH GATES OF SPLENDOR"
- FEB. 11 "DRUGS ON CAMPUS"
- FEB. 18 "THE WON WORSHIPPERS"
- FEB. 25 "ANGEL IN EBONY"

COLLEGE DEPARTMENT MEETS IN THE NNC ADMINISTRATION BUILDING

COLLEGE CHURCH OF THE NAZARENE
JERALD D. JOHNSON, PASTOR

Hale and Wilder concert features variety of moods

by Jan Rank

Robert Hale, leading bass-baritone with the New York City Opera Company, and Dean Wilder, Head of the Voice Department at Westminster Choir College of Princeton, New Jersey presented a concert for the Nampa Concert Series Monday.

For two hours the duo entranced their near-capacity audience with music representing a variety of moods.

"Sound the Trumpet" by H. Purcell was the first number presented. It opened the way for such various numbers as selections from *Jephtha* and

Julius Caesar by G. F. Handel, German love songs by Schubert and Brahms, and "Les Contes D'Hoffman" by J. Offenbach. For the inexperienced opera listener, the stories were explained.

The second half of the concert turned toward more familiar pieces for the average listener. The aria-- "Toreador Song" from "Carmen" by G. Puccini was sung by Mr. Wilder. The final portion of the concert included such popular numbers as "The Sweetest Sounds" by Rodgers and Williamson, the Olde English song-- "Scarborough Fair" and "The Impossible Dream" from *Man of La Mancha* by Leigh-Darion.

Also featured during the concert was Ovid Young, accompanist and arranger. The three have made more than 700 appearances since 1966. Mr. Young played "Variations Serieuses Opus 54" by Mendelssohn and "Rapsodie Opus 11, No. 4" by Dahmanvi. A standing ovation was given the pair and their accompanist. The three musicians have all attended Nazarene colleges. Hale graduated from Bethany, and Young from Olivet. Wilder, though not a graduate, attended NNC. He was also a faculty member here from '66-'68. Wilder was a member of the first Northwestern group assembled here on campus.

A sacred concert was presented by Mr. Hale and Mr. Wilder in College Church Sunday night.



Fine arts display features Watercolors and caseins

The work of California artist Leonard Scheu will be on display this month in the Fine Arts Building. Mr. Scheu's watercolors and casein paintings and landscapes, harbor scenes, boat and old buildings have earned him wide acclaim. His paintings have been exhibited at several large museums including the Brooklyn Museum in New York and the Los Angeles Museum of Art. The West Coast, from Canada to Mexico, is vividly depicted in his various works.

The exhibition, consisting of 21 watercolor and casein paintings, is being circulated throughout the nation by the Old Bergen Art Guild of Bayonne, New Jersey. All the paintings are for sale at prices

ranging from \$75 to \$200. They will be available for viewing Monday through Saturday from 9 a.m. to 10 p.m. in the main entry hall of the Fine Arts Building from January 5 through January 21.



I'm proud of where he bought my diamond!

Will she be proud or embarrassed when friends ask where you bought her diamond? And, will you be embarrassed about the price you paid for the quality received? Today, there are no "bargains" in diamonds. You save no more--often lose--when you try to cut corners. Your knowledgeable American Gem Society member jeweler--one with a local reputation to safeguard and standards to maintain--is your wisest choice. Moreover, she will be proud to know her diamond came from us. Don't disappoint her.

MEMBER AMERICAN GEM SOCIETY

Sexty's
9th and Idaho
JEWELERS
DOWNTOWN BOISE
TERMS OF COURSE!

aj nnc

today

Filing for vacancies in the offices of Sophomore class treasurer and chaplain closes at 6:00 p.m. Election will be Wednesday, January 17, during the Sophomore class meeting. Filing also closes for a vacancy in the Counseling Committee. This position will be filled at next Tuesday's Senate meeting.

NNC basketball team plays Whitman in Walla Walla.

Wrestling squad goes to La Grande for two-day EOC tournament.

tuesday

"Meet the Interns." All students in education are urged to attend the 7:00 p.m. program in Wiley Learning Center, Rooms 137-38. NNC's 12 elementary intern teachers will be on hand to share their classroom experience and discuss the Intern program.

thursday

Basketball team plays Oklahoma Christian there.

next weekend

Basketball team plays two games with Bethany Nazarene College there.

Junior class melodrama.

Operation Satisfaction receives SNEA grant

Operation Satisfaction, the volunteer service program to children in the Nampa area, has received a grant from the Student National Education Association for 1973.

The grant, awarded last November, is in conjunction with the Pilot Project Program of the SNEA, headquartered in Washington D.C. NNC's project was the only one selected from four major applicants by the national organization. The amount of \$1350 was awarded the local project with additional funds coming from the State SNEA and ASNNC allotment.

The service project is concentrating in three major areas. The friendship program, under the direction of freshman Dennis Johnson, will emphasize the big brother and sister concept to students in area elementary and junior high schools.

The community action division, directed by Barry Grant, will assist with recreation at the Idaho State School as well

as helping in certain areas of the Canyon County Welfare Department.

The last area, tutoring, will concentrate with improving the perception and study habits of young students. The local SNEA chapter and Alpha Delta Sigma, the honor society, will assist in this phase.

Funds from the SNEA will be made available during second and third terms. Final plans for recreational, cultural, social, and educational activities are being completed and assignments are being taken in the Operation Satisfaction office in the ASNNC offices. Any student who is enrolled at NNC is eligible for the program.

Since the program is relying strictly on volunteer services by students, the success of Operation Satisfaction 1973 is entirely dependent on student participation.

BETTER GROCERIES
at
MEW
market

NAMPA'S LARGEST
AND MOST COMPLETE
GROCERY MARKET
Holly Shopping Center

Feiffer

WE HAVE FACED
GRAVE TESTS
IN THIS WAR.



AND NOW WE
ARE CALLED UPON
TO FACE THE
GRAVEST TEST
OF ALL.



WE HAVE FACED THE
LOSS OF THOUSANDS
OF SOLDIERS IN
COMBAT.



THE ENEMY HAS KID-
NAPPED AND IS HOLDING
FOR HOSTAGE IN CENTRAL
HAIPHONG AND HANOI
THE HEAD COACHES OF
THE NATIONAL
FOOTBALL LEAGUES.



WE HAVE FACED
THE LOSS OF
HUNDREDS OF
FLIERS OVER
NORTH VIETNAM.



SO I SAY
TO HANOI:
ENOUGH!



WE HAVE FACED
THE INHUMAN
INCARCERATION
OF OUR PRISON-
ERS OF WAR.



AS PRESIDENT
I AM WILLING
TO FACE ALMOST
ANYTHING.



WE HAVE FACED
TAUNTS AND RE-
CRIMINATION AT
THE CONFERENCE
TABLE.



BUT I CAN'T
FACE THE LOSS
OF NEXT
SEASON.



why is it? 1d.

In a recent issue of The Crusader, a student wrote a letter to the Editor expressing his disagreement with the policy which allows no food or beverages to be taken into the gym. The answer may be obvious but we will still ask the question:

Q. Why are soft drinks and popcorn not allowed in the bleachers?

A. Soft drinks get spilled and popcorn gets stepped on. After waiting all these years for the completion of the new building, the P.E. Department is understandably proud of its new baby. And if it seems that they are acting like an overprotective mother, we understand the at-

tempt to keep the building in top condition. After sitting through all those games at Nampa High, not taking food into the bleachers seems to be a small concession.

When the gym becomes a little more lived in, (say in about 20 years) the stringent "no food" policy will no doubt be modified. As for the suggestion that food not be sold at all under these conditions, it is the opinion of this writer that more people would complain about that.

What the policy makers must remember is that the new gym was built to be used and enjoyed by the entire campus community. It's a gym--not a museum--and it belongs to all of us.

When you are stuffing down the popcorn and gulping down your Coke to make it back to your seat before the second half starts, remember that it could be worse...at least they didn't make you take off your shoes at the door.

WANTED: Someone to sing children's songs, play the guitar, and read stories.

Pay is to be arranged.
Hours for the job are 10:30 on Tuesdays or 1:30 on Thursdays for one-half hour.

You will be working with 15 3-4 year olds at each session.

Contact the ASNNC office or call 466-6121.

WANTED: Someone to help milk cows.

Pay is to be arranged.
The location is in the Wilder area.

Contact the ASNNC office or call 487-6495.

BEYOND THESE WALLS

by Dick Luhn

The prospect of peace that seemed so strong at the end of November now seems extremely weak. Henry Kissinger had predicted that a settlement was at hand. Six weeks later this is not the case. Dismissing any idea that President Nixon planned the rumors of peace to insure his victory still leaves several questions unanswered.

Bombing of the North is the tactic being used to force the

North Vietnamese into peace. It would seem that the history of the war indicates the futility of this course. Lyndon Johnson's heavy bombing of the North for three years seemed only to deepen North Vietnam's resolve to continue the war. If the latest bombing raids are more intense, this does not ensure different results.

Many neutral sources, and the North Vietnamese have stated that the civilian popula-

tion is being bombed. This calls into question America's claim that her goal is to preserve Vietnam.

If the involvement is not limited, it is up to Congress to take over and set policy. However, the barrage of unrelated bills introduced in Congress after the bombing only shows the reluctance of most members to force a showdown between executive and legislative powers.

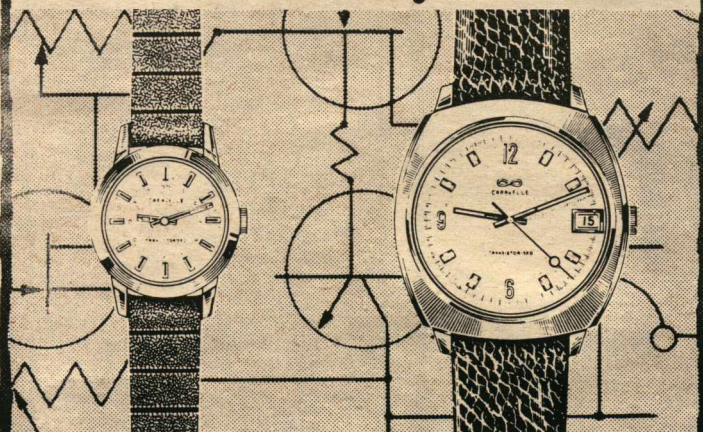
Perhaps the strongest aspect of the recent developments is the reaction of the American public. It is almost as if Americans are resigned to Vietnam being an insoluble problem. Evidently bombing raids are much less personal than boys dying in the field.

LETTER POLICY

Letters to the Editor are welcomed from all areas of the NNC community. Letters are limited to 350 words and must be signed with an address. Letters must be typed (double-spaced), and must be in the Crusader office by 9:00 a.m. Tuesday.

The Crusader reserves the right to make any minor grammatical or punctuation corrections/additions necessary to present the letter in good journalistic form. The Crusader also reserves the right to withhold any letter it views as libelous or outside the bounds of good taste.

FOR \$49.95
BE MODERN
GO ELECTRONIC.
CARAVELLE® by BULOVA



FOR HER... FOR HIM...

For \$49.95 you can give a Caravelle Electronic by Bulova. The watch that never needs winding. Today's best buy in transistorized time.

You can depend on a Caravelle Electronic because it depends on a reliable little transistor, an ingenious bit of electronic circuitry and a tiny long-life battery. Backed by Bulova. Caravelle Electronic... an expensive watch at an inexpensive price.

Hamilton Jewelers

Nampa

OWYHEE
JOPPING
CENTER
466-2436

Nampa's complete drug store

DRUG

STEAMBOAT GULCH

Rope tows and
tube rentals
10 to 10 Sat. and Sun.
6 to 10 fri.

ONE MILE PAST IDAHO CITY
RACE TONIGHT UNDER THE LIGHTS

MUSIC
BOX

122 13th Ave. S 466-3400

Giant
Clearance
Sale
Records,
tapes and
pop music

Sale ends Jan. 20, 1973

OPINION AND COMMENT

RANDY CRAKER, Editor

RANDY PETERMAN, Managing Editor

NEIL READ, News Editor

DICK LUHN, Features Editor

LOREN ELLIS, Business Manager

JAN WEISEN, Production Manager

DARRELL BLOOMQUIST, Advertising Manager

VOL. XXII NO. 7



Page 5

January 12, 1973

Wilkes' trip violates budgeting rationale

At the beginning of this year several drastic changes were made in the ASNNC budget. Most notable of these were the complete abandonment of the Model United Nations program, as well as a radical cut in the allotment to the forensics program. The rationale behind these changes was that the activities did not benefit the entire student body, and therefore should not be paid for from ASNNC funds. We agreed with this rationale.

Recent student government action, however, to help finance a trip by ASNNC President Chuck Wilkes to New Milford, New Jersey, seems to violate this rationale.

Wilkes is presently in Kansas City for a Nazarene Student Leadership Conference. Following the conference Wilkes is travelling to New Milford to visit the "Hippie" Church of the Nazarene there. His purpose is twofold: to report to the College Church Sunday School class, and to report to NNC students, on the operation of the New Jersey church. College Church is paying a portion of the expense, but the remainder of the bill is to be paid by ASNNC.

Wilkes' rationale for the New Milford trip is at best superfluous. First, sophomore senator Kay Smith visited the New Jersey church recently, and has offered to report on her contacts with its operation. Her offer has been overlooked.

Second, if the church and student leaders are looking for new methods of spiritual outreach for the college student, why have they not utilized the testimonies of those students that attended Explo '72? No attempts have been made for NNC students to benefit from these experiences last summer.

Third, if ASNNC is truly concerned with spiritual outreach, and at the same time wishes its budget outlays to benefit the whole student body, why was not the New Milford pastor brought here? Rev. Paul Moore, pastor of the "Hippie" church, is scheduled to speak in Denver within a month. Surely student funds could have been better spent bringing Rev. Moore from Denver for an Issues and Answers convocation, than in sending a student to New Jersey. This would also have been much more in keeping with ASNNC's budgeting rationale.

rj & rap

by Norm Sandlin

It is essential to the existence of man to believe in something no matter what it may be. If not, he will most assuredly find an "out" in suicide or insanity. All men need a certain amount of security, stability, and most important of all, a feeling that they are a relevant part of society.

Man is in an interesting predicament. He is the only organism known that is capable of realizing certain things about himself. For instance, how did we get here? Who put us here? Where do we go after we die? These are just a few questions which no one has answered, to my satisfaction anyway. I feel animals have it over us in some ways. They do not have to worry about such things as life after death. They just die and rot. Would not that be just a simple natural progression?

Life in the bloodstream is made up of many questions and few answers. Why is it? Why do we have the ability to recognize things that we can not answer? The only observable difference between man as a species and any other living thing is his capability to recognize the predicament in which he is in! And when you think objectively about the predicament in which we are in it becomes quite frustrating.

Since we do not like frustration we somehow must explain some things (right or wrong, it makes no difference) to ourselves so we will not be bothered with unanswered questions. Some people call this rationalization. I think Jim Morrison came closer to the truth when he said:

All our lives we sweat and save,

Building for a shallow grave,
Must be something else we say,
Somehow to defend this place,
(Everything must be this way,
Everything must be this way).

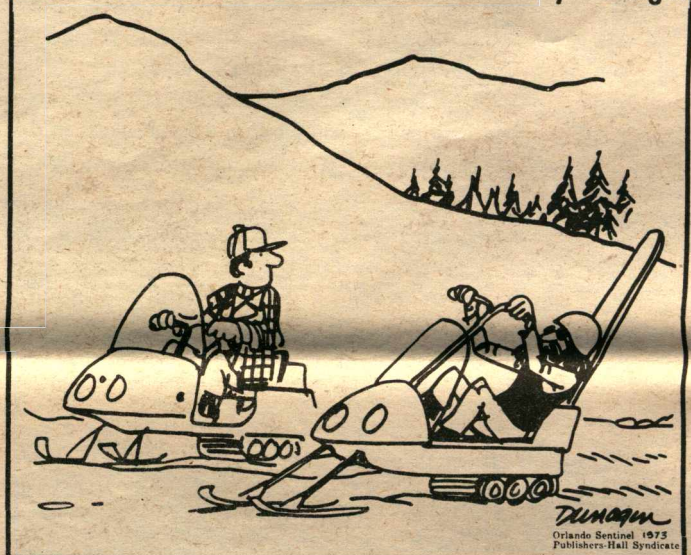
I have asked, searched, inquired, questioned, debated, listened, and talked but after all that, I have learned that the things I want to know nobody can tell me. So Bloodstreamers, what it comes down to is believe what you think to be the most plausible way. Whatever seems to work use it to its full extent, cleave to it, defend it, but most of all believe in it. James Griffen says "take comfort where you find

it" and I agree.

Take comfort where you find it,
Whatever gets you through,
Take comfort don't be blind to it,
You must do what's right for you.
Take comfort where you see it,
Whatever makes it right,
Take comfort when you need it,
To help you through the night.
By the way we live in our confusion,
And the way we misspend our youth,
By the time we are stripped of our illusions,
We may find illusions are the truth.

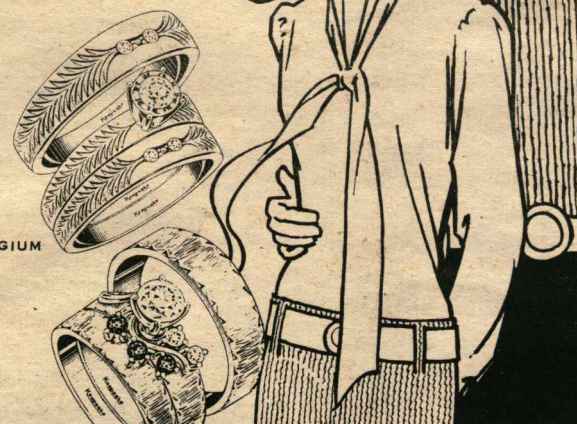
DUNAGIN'S PEOPLE

by Dunagin



Triple Treat

Keepsake Bridal sets . . . for her, stunning diamond engagement and wedding rings. For him, a matching wedding ring. Quality crafted and guaranteed.



Keepsake
REGISTERED DIAMOND RINGS

THE DIAMOND STORE OF TREASURE VALLEY

Call Jewelers

818 IDAHO ST. DOWNTOWN BOISE 343-3444	1004 VISTA AVENUE VISTA VILLAGE BOISE 344-3201	124 13th AVE. SO. DOWNTOWN NAMPA 467-1071
--	---	--

Meet the NEW OMEGA Compact
Olds. at a Compact price
Dobbs Bros. Motor Co. your
Oldsmobile-G.M.C. Dealer.

NAMPA

PHONE 466-3564

A service for those who
want something different
CONTEMPORARY WORSHIP 8:30 A.M.

**Franklin Road Church
of the Nazarene**

Bus transportation from the Student Center at 8:15 a.m.

Work Sundays? Then worship at this early morning service.

WANTED!!!!

WANTED!!!!

WANTED!!!!

A person to assist

the ads manager

of the 1973

Oasis Very good

pay. Apply at

the Oasis office.

Crusaders' inconsistent play results in victory, defeat

The NNC Crusader basketball team came out at the half Monday night to stretch their eight point lead to a 86-66 victory over the Pacific University Boxers. The situation was reversed Tuesday night as they faced a seven point handicap at the half and came out to watch the score move toward a 77-64 defeat at the hot hands of the Whitman Missionaries.

Play and reactions went from great with rejoicing to tepid with dejection in the course of the two evenings. Following the Pacific game Coach Hills was heard to exclaim, "Good? It was great!" Tuesday night all he could say was that his team was "flat," both defensively and offensively.

Monday night the Crusaders jumped to a quick 18-8 lead as a result of good play on the part of Luhn, Phelps, and Rumpel. Pacific, however, eventually

runaway victory was NNC's rebounding edge. NNC grabbed 56 rebounds to Pacific's 40. Rumpel pulled down 18 of NNC's total himself, while Broussard led the Boxers with 10. Broussard also led his team in total points with 21, but NNC's Luhn played a steady game and came up with the game high of 25, closely followed by Rumpel with 23.

The win was NNC's second with Pacific in three tries this year.

Coach Hills attributed the results to his team's "putting it all together." He noted that they moved very well on both ends of the court, keeping up a quick pace and utilizing the fast break.

The Tuesday night game was entirely different. The Crusaders started out well, scoring the first three baskets of the game. Then Jim Volz of Whit-

man

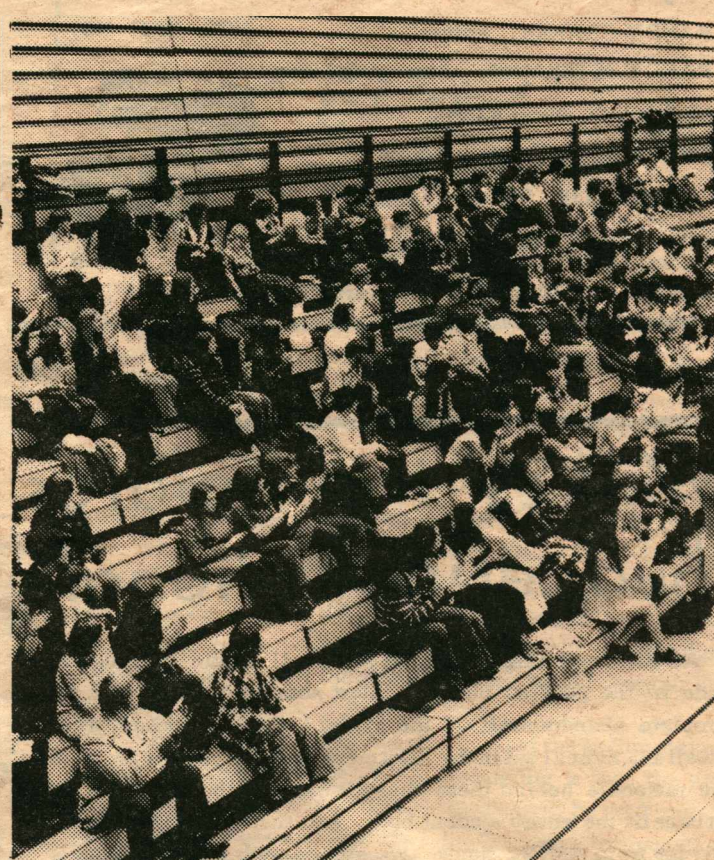
key. The statistics show that NNC was also hurt at the free-throw line. NNC only had eight attempts, of which they hit six, while Whitman made a spectacular 21 of 24. Hutton led the way hitting 9 of 9.

This proved to be the difference, since NNC scored one more field goal.

Both shot well from the floor, NNC hitting .433 and Whitman .528.

Both teams displayed careful, controlled style, and Tuesday night Whitman exhibited the best control. Perhaps, as Hills pointed out the Crusaders were overly reluctant to run with the ball.

The Crusaders have a rematch with Whitman tonight in Walla Walla.



Spectators demonstrate their approval of the Crusader's play at a recent home game.

INTRAMURAL SPORTS SHORTS



by John Wilcox

After a somewhat abbreviated Christmas Vacation, along with second term "freeze-out," the Crusader reappears. Basketball is now the sport on the Intramural Agenda.

In the season opener, the Spartans defeated the LSP's 48-37. The Spartans had a balanced offensive attack led by Jim Wilcox's 9 points, followed by Terry Irish's and Lynn Bowerman's 8 points apiece. The LSP's put on a surge in the second half, led by John Spencer's dozen points, but could not surmount the lead.

The SLA's squeezed by the OLY's 47-42, led by Randy Meier's 19 points and Val Hein's 12 points. The OLY's had a more balanced scoring attack with Rob Wilden and Steve Latham leading the way with 8 points each.

The all-around powerful ADP's walked by the Athenians at the speed of 85-36. The ADP's had four men in double figures, with Darrell Tyacke getting 24, Bob Sturtevant 17, Norm Sandlin 13, and Marvin Merkel 13. The Athenians were led by Randy Price's 13 points and John Wilcox's 10.

The SLA's outlasted the Spartans 64-62. The SLA's got most of their points from Roger Schmidt, Mike Lemont, who each got 18, and Randy Meyer who pumped in 16 tallies. The Spartans were guided by Jim Wilcox with 18, Ken Reed with 12, and Lynn Bowerman with 10.

The stubborn Olympian's

out-muled the Athenians 37-35. Wayne Skeen led the OLY's with 12 points, and was supported by Bobby Miller who scored 8 points. The Athenian's scoring "punch", if that strong of a word may be used legitimately, came from Don Glaze who got 10 points, Randy Price, and John Wilcox got a half dozen tallies apiece.

The ADP's smashed the LSP's as only they know how, 82-37. Bob Sturtevant could have given the LSP's a strong battle by himself as he scored 33 points. Darrell Tyacke also scored heavily for the ADP's with 23 points. John Spencer and Steve Fine contributed 8 points apiece for the losing LSP's.

The Spartan's romped on the Athenians 75-39. The Spartans utilized a very balanced attack, having five men place in double figures. Randy Craker had 18 points, Ken Reed 16, Tim Wheatley 14, Dave Baird 13, and Jim Wilcox 12. Rick Shafer and Don Glaze led the Athenians with 8 points each.

The SLA's handily defeated the LSP's 74-43. Chris Moore led the SLA's with 16 tallies, followed by Ed Robinson's and Roger Schmidt's 12 points apiece. Bradd Hille, a surprising freshman, scored 17 times for the LSP's. Bruce Hardesty added 10 for the losers.

The ADP's had a tough time against the Olympians but beat them nevertheless 45-41. Steve Galloway and Darrell Tyacke scoring 13 and 12 points respec-

tively, led the winners. Bob Jackson's 15 points and Bob Hebb's 8 points led the OLY's.

The Athenian's finally got untracked and defeated the LSP's 47-35. Randy Price garnered 13 points to lead the Athenian's. Don Glaze and Rick Shafer added 8 points apiece. John Spencer hustled his way into the hearts of his fellow LSP's as he led them with 11 points. Bradd Hille pitched in 9 in a losing effort.

Four entries await Super Bowl outcome

The Super Bowl Contest produced a pathetic eight entries. Four of the entrants correctly picked Miami and Washington as Super Bowl opponents. Two thought Dallas would beat Washington and the other two unmentionables (the names have been withheld to protect the ignorant) picked Miami over Kansas City. Of course all of you experts will immediately realize that Miami and Kansas City are both in the American conference and therefore cannot possibly meet in the Super Bowl.

Larry Burns and Chuck Hallin both picked Washington as the ultimate victor, and if they are right they will have to split the five dollar prize as they both guessed the total score as 44 points. Darrel Percy and Harry Turner picked Miami, with Percy also going with the magic number of 44.



tied the score at 28-all on a shot by Eldridge Broussard. Jay Nutting then came to life and hit four crucial baskets to pull the Crusaders to a 39-31 lead at the half.

The hustling Crusader defense had held Broussard to only five points in the first half but he finally broke loose to lead Pacific to within two points of NNC mid-way through the second half. Now it was Rumpel's turn to cut loose, and he did just that, scoring, rebounding, checking shots, and generally intimidating the Boxers. La Croix came in to contribute his cool head and Bruner came in to do his usual hustling, and with some solid team play the Crusaders slowly pulled away for the win.

An important factor in the

man started doing his thing, finally tying the score 16-16 on his fifth bucket, with a diving lay-up. The rest of the half was downhill as the highly-touted Missionaries took advantage of a spell of cold shooting and mistakes by the Crusaders to develop a 38-31 half-time lead.

Throughout the second half the Crusaders hung within four to ten points of the elusive Missionaries before their desperation play gave Whitman's victory an impressive appearance at 77-64.

The NNC zone seemed inadequate to cover Whitman as the visitors managed to get open frequently for short jumpers. Millie scored most of his 12 points from the baseline while Garland picked up 12 around the

Uriah's heap

The Crusader basketball team entered the new term with a discouraging 5-7 record. It has been that kind of a season for the Crusaders.

The team has had difficulty putting together two good halves of solid play to take those hard ones. One almost fears a good first half because it seems to bring on a sluggish second half. Several of the wins and close losses have resulted from brilliant second half comebacks.

Coach Hills has been frustrated in his attempts to find a sure-fire starting combination. A good season is impossible if the coach cannot come up with five players whom he can start on any given night with reasonable assurance of an adequate performance.

All is not bleak, however. The Crusaders have managed to put together some excellent games, plus many outstanding individual performances. Ray Rumpel's play has been consistently outstanding both in scoring and rebounding. Dick Luhn has had inconsistent scoring but has shown consistent hustling and can be counted on reaching double figures at least every other game.

Steve Phelps has improved substantially. He is scoring and rebounding much better than at the start of the season and has generally become a more reliable ballplayer. This should help the Crusaders who have been weak inside. Jay Nutting has also improved, developing into a more potent scoring threat.

To finish up the season in style the Crusaders need only "put it all together," as coaches love to say. If a couple more players would start playing up to potential and the whole team could get their heads together for the complete game they could come up with a surprising season. The team has shown stronger possibilities than had been expected at the start of the season.

* * * * *

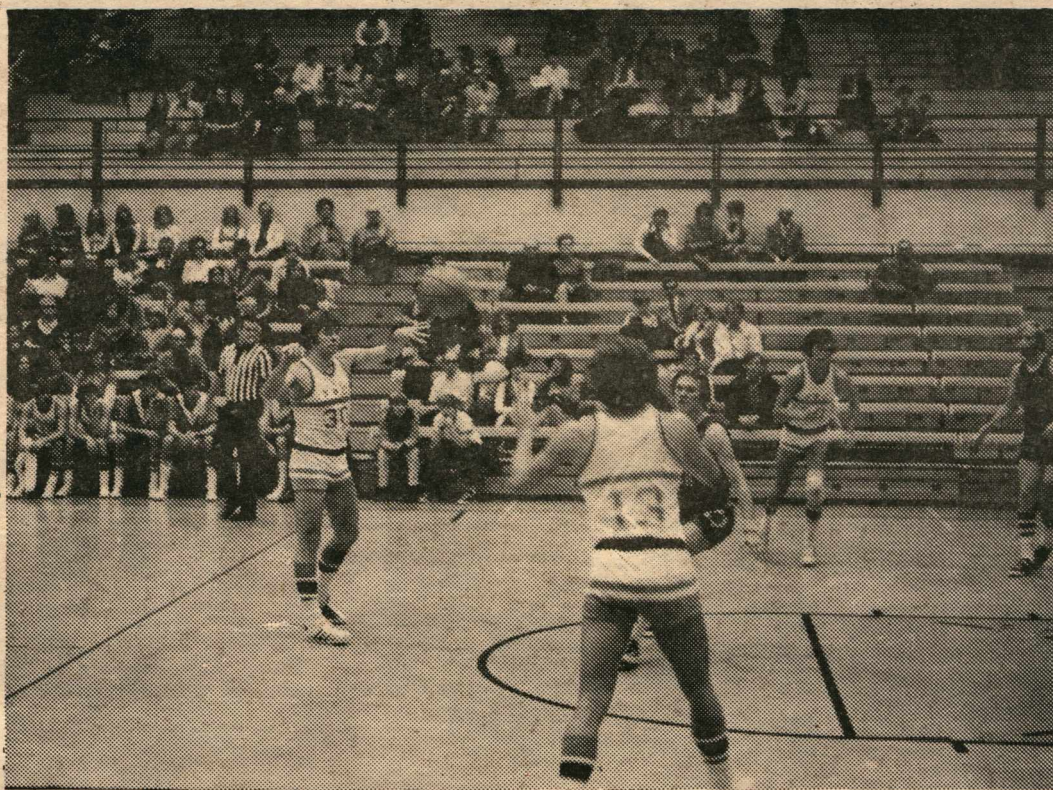
The Homecoming crowd saw the Crusaders make a fantastic comeback in the second half, making up a 15 point deficit to win by 3 points in overtime. Rumpel and Luhn were the heroes in this Homecoming classic, with Bruner and Walker helping spark the comeback. However, the following evening the Crusaders fizzed out in the second half to lose by five points. Rumpel had his most productive game with 26 points and Phelps had his first good game.

While the rest of us were cramming for finals the basketball team traveled to La Grande for the Tip-Off Tournament. NNC did the comeback thing again, making up Pacific's 11 point lead at the half to win by 9. The following evening saw a replay of the previous weekend as they fell apart to lose the championship game to C of I. Next they went to play C of I on their home court. Trying for another comeback, the Crusaders came within one point in the second half only to disintegrate and get walloped by 25 points.

After we had all split for home the Crusaders hit the road again. In a game marked by balanced scoring (but evidently not enough) they fell to Westminster 92-76. Luhn, Nutting and Rumpel all got 16, and Page came through for 18. Page and Nutting both got their season highs in this game. At Portland they picked up a couple of smooth ones against Columbia Christian, but this time lost to Pacific.

Olivet came to the Holiday Tournament sporting a fine reputation and proved that they were every bit as tough as they were supposed to be. The Crusaders played what Coach Hills called their finest game of the season but still lost by one point in overtime. The next game saw the Crusaders down only one point at halftime, only to be out-hustled and out-muscled in the second half. In the first game Rumpel got the ridiculous amount of 30 rebounds.

In the first action of the new year the Crusaders beat EOC 70-65. Luhn and Phelps had exceptional games, scoring 19 and 18 points apiece. Rumpel was down a little from his team leading 16.5 average with 12 points. Rumpel also leads in rebounding with an average of 15. Phelps leads in field goal percentage with 53% and Nutting leads in free throw percentage with 79.5%.



Women's team prepares for season's opener

by Sandy Vail

Sore muscles and tired, aching bodies seem to be most characteristic of the women's extramural basketball team after their first week of practice. They are putting in a lot of long, hard hours preparing for the season opener Jan. 30th.

The team roster has both old and new faces. Some of the oldies are Joan Tindall Standley, Sandy Bennett, Jean Stevens, and Vicki Chittenden.

Some of the new faces are transfer students Paula Crum and Patti Pearson, and freshman Mary Luhn.

The Crusaders have a tall team, led by Elaine Rumpel at 6'1". The team also has 3 players over 5'10" plus several at 5'8". Linda Hill and Jean will also provide an outside attack.

The 1973 schedule is as follows (*denotes home game):

Jan. 30*	C of I
Feb. 5*	tba
Feb. 10*	EOC
Feb. 13	BSC
Feb. 16-7	Pocatello
Feb. 20	C of I
Feb. 23	EOC
Feb. 27*	BSC
Mar. 1-3	N.W. Tourn.

Road race scheduled tomorrow

Coach Taylor is organizing a road race at 11:00, Saturday, Jan. 13. The runners are to meet at Lake Lowell and run to NNC and back, a distance of ten miles.

Plaques will be awarded to the top three finishers in each division. Every finisher will earn a certificate. There will be five divisions: high school, college, 19-29, 30-39, and 40 up.

Runners should arrive at Lake Lowell at 10:30 to register and pay the dollar entry fee.

KARCHER MALL CRAZY DAZE THIS WEEKEND
COME INTO

LAFAYETTE RADIO

THE VERY BEST OF EVERYTHING IN

STEREO EQUIPMENT

Panasonic recorder	mini - 8 car stereo
with built - in microphone	with fast forward
great for lectures	and tape lamp
reg. \$49.95 now \$39.95	reg. \$69.95
stereo headphones	now \$39.95
\$4.95 - \$29.95	all car speakers 30% off

BRING IN THIS AD FOR 50¢ DISCOUNT ON LP RECORDS

Roy Mottram - Mgr

Asian Institute to focus on current developments in China

On this 60th anniversary of NNC, the Asian Studies Program (half a century younger) is enjoying its tenth anniversary. It was in 1963 that Dr. Thelma Culver and Dr. Double E. Hill decided to offer an "Asian Institute" particularly for, but not limited to, students in the Northwesterners who were planning a tour of the Pacific Command (Japan, Korea, Okinawa, Guam, and Taiwan).

Since that time the Non-Western Studies program has branched out to include a Non-Western Studies section in the library, seven members on NNC's faculty who have traveled and studied in Asia, and seminars on Africa and Latin America.

The Asian Studies Program has aimed to expand the students' area of learning beyond the heritage of Western Civilization to understand other world cultures as growing and dynamic with a past, a present, and a future.

This quarter Asian Institute features lectures from six NNC professors as well as lectures

from two visiting speakers.

Dr. Charles Hedtke, Associate Professor of Oriental Studies at the University of Arizona, will give lectures entitled "Determinants of Chinese Foreign Policy" and "China Today: Progress or Deterioration."

Lisa Hobbs, a professional journalist who had traveled in China before the Cultural Revolution of 1966-68, will give two lectures entitled "China."

The emphasis of this year's Asian Institute is upon China, which should make it particularly relevant in light of recent world developments. Visitors are welcome at all of the lec-

tures which are listed in the advertising on Non-Western Studies posted around campus.

There has been some decline in enrollment in Latin American Seminar and Asian Institute because of less demand for a small course to complete the normal credit load under the new academic system. Also in the mathematics of the new system, $\frac{1}{4}$ unit is worth slightly less credit than 1 credit was previously. In view of declined enrollment the Non-Western Studies program hopes to reorganize Asian Institute into a full course unit.

First-term honor roll numbers 165

The honor roll for term one finds 165 students earning a 3.4 average or better. The Junior's 49 honor students were the top in the class divisions. Forty-four sophomores, thirty-nine freshmen and thirty-three seniors complete the list.

The following students earned 4.0 averages:

Seniors

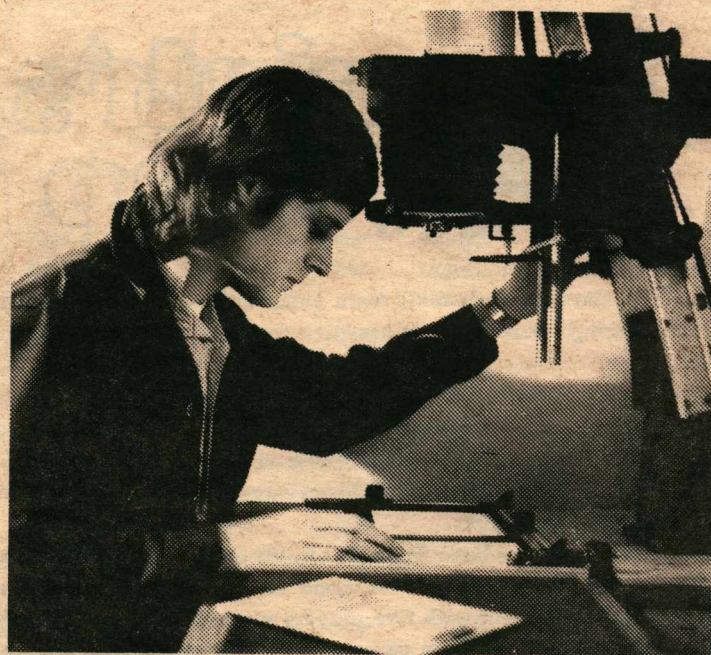
Edwards, Robert
Hoshide, Kathy
Johnson, Janet
Kershner, Linda
Phillips, Roy
Slonaker, Norma
Belzer, Marvin
Bennett, Philip
Dickerson, Collette

Cotner, Cheryl
Crock, Julie
Ford, Gail
Lovell, Robert
Marsh, Rebecca
Meier, Gary
Read, Neil
Reed, Velma

Roth, Tim
Williams, Paula
Sophomores

Aeschliman, Ulys
Jensen, Shelley
Kausche, Glenda
Knapp, Barbara
Lancaster, Debra
Lanman, Patricia
Lass, Jean
Lilly, Lauren
Maddox, Randy
Merriner, Charles
Ratzlaff, Nettie
Spencer, John
Spencer, Mark

Freshmen
Airhart, Cameron
Cullum, Michael
Dalen, Janice
Kronberg, David
Lance, Tracy
Pletcher, Rhonda
Trigg, Max



Crusader Business Manager Loren Ellis examines new equipment in the Crusader-Oasis darkroom, located in the basement of Chapman Hall.

Crusader, Oasis offices renovated

General redecoration and the setting up of a dark room have completed Crusader and Oasis office improvements.

Refurnishing the offices in the upstairs of the Student Center was done by the office staffs.

The dark room has been outfitted in the basement of Chapman Hall. Both offices hope to reduce photography cost through the new facility. The dark room will also be used

by the Ed Media Center in training interested students.

Loren Ellis, Crusader Business Manager and photographer, did the construction work during the holidays. The equipment was purchased from a photograph shop in The Dalles, Oregon.

Students interested in photograph development training should contact Mr. Mel Schroder.

Dr. Riley to maintain busy travel schedule

Second term has been a busy one thus far for Dr. Riley and there is more ahead.

The first trip on his agenda was a recent visit to the newly acquired campus of Pasadena College. President Riley was impressed with his introduction to the campus and its new location. The campus is located on the outskirts of San Diego overlooking the Pacific Ocean.

President Riley will again be visiting California when he

leaves tomorrow to attend the annual Association of American College Presidents which will be held in San Francisco. Held in conjunction with this conference will be a meeting of all the Nazarene College Presidents.

He will leave for Kansas City on Sunday to attend the Educational Board Meeting of the Nazarene church. While in Kansas City he will also attend the General Court of Appeals of the Nazarene Church of which he is one of five members.

He will fly to New York City on the sixteenth. There he will confer with a group of men concerning possible grants for NNC.

NAMPA'S ROLLERDROME

ONE OF THE NATION'S FINEST!

PUBLIC SKATING SCHEDULE:

Wed., Fri., Sat. evenings
Sat. & Sun. afternoons

Private parties on Mon.,

Tues., Thurs., evenings or
Mon. thru Fri., afternoons



SCHMITT'S Shoe Repair

IF THE SHOE FITS REPAIR IT

116 12th Ave. So.

come in for expert attention
YOUR SHOE SERVICE

Country Inn

FAM. REST. ANTS



WAYNE MATTHEWS, TED BLAMIRES, FLOYD BLAMIRES

YOU MAY THINK THAT
THE COUNTRY INN HAS
EXPENSIVE PRICES BUT
IT DOESN'T

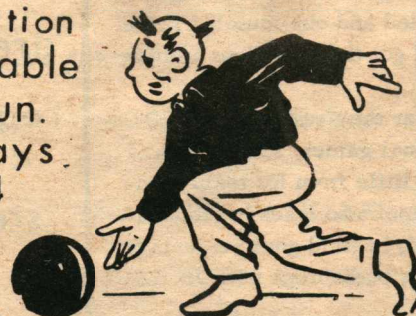
803 - 12th. Ave. So.

BULLDOG LANES BOWLING FOOSBALL POOL

special student rates
-free instruction
lanes available
Fri.-Sat. Sun.
and Holidays
466-6414

Pizza and Snacks
467-2282

10 MINUTE SERVICE



Bullock jewelers

OPEN A CHARGE
ACCOUNT!

1217 1st St. S.
Nampa

OPEN FRIDAY NIGHTS
UNTIL 9:00 P.M.